



HELB

Engineering for energy infrastructure



[www.helb.hr](http://www.helb.hr)

## Mission

*We are an engineering team based on experience, excellence and partnership that provides solutions beyond expectations.*

*We are proud to make electricity available for next generations through our community and co-creation.*

## Vision

*We will become a digital engineering company by 2025 through continuous creation of top experts.*

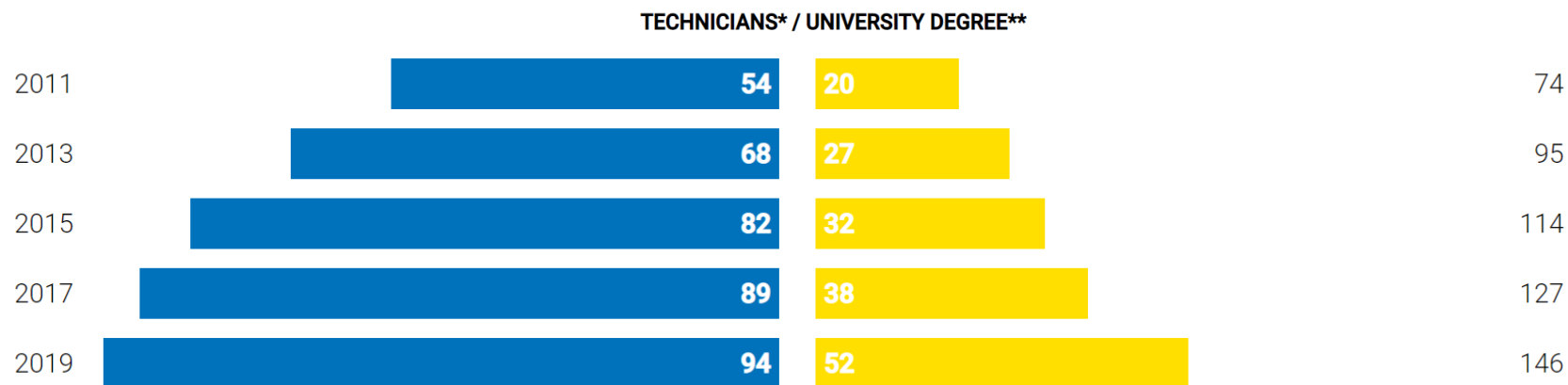
*We will be the first choice in the integration of advanced power systems through the implementation of new technologies and knowledge on the local and global market.*

# Values

- Cooperation / Communion / Partnership
- Openness / Trust / Sincerity
- Responsibility
- Contribution / Productivity / Creativity
- Learning / Flexibility / Adaptability
- Love / Care about somebody and/or something

# Business segments

- ENGINEERING SERVICES
- PRODUCTION
- PLAN CONSTRUCTION
- OIL AND GAS
- CONTROL AND MAINTENANCE



\* A technician means a highly qualified employee with a maximum of high school certificate.

\*\* The university degree marks the first-degree diploma, graduate degree and master's degree.

# Engineering



Engineering Services



Production



Plant Construction



Oil and Gas



Control and Maintenance

# Quality management systems

**ISO 9001 | ISO 14001 | ISO/IEC 27001 | ISO 45001  
| SCCp | ISO/IEC 29001**

- MORE THEN 250 PROFESSIONAL TRAININGS
- MORE THEN 120 CERTIFICATES



# Engineering services



[www.helb.hr](http://www.helb.hr)





**Engineering Services**



Production



Plant Construction

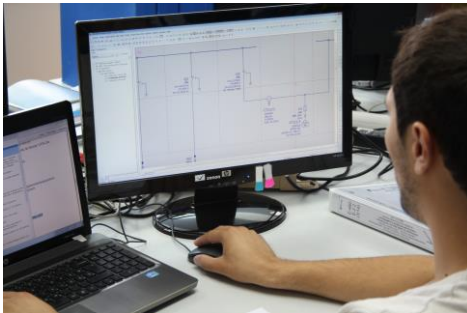


Oil and Gas



Control and Maintenance

— IN-HOUSE SOLUTIONS FOR  
THE CONSTRUCTION OF  
THE POWER  
INFRASTRUCTURE.



## **DESIGNING**

EPLAN Electric P8, AutoCAD, DiaLUX, Relux software tools and other specialized software



## **AUTOMATION**

Automation of the manufacturing process or an optimization for power consumption



## **TESTING**

From basic and functional testing to specialist and diagnostic testing



## RELAY PROTECTION

Extends the testing from the primary (power system) to the secondary (control system)



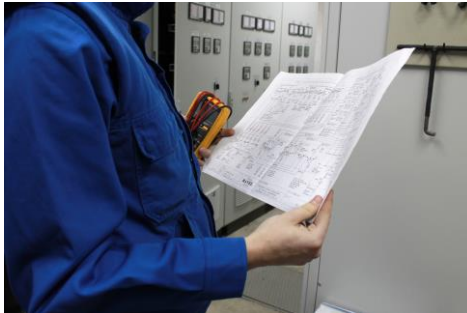
## PROJECT MANAGEMENT

Using our own developed business software system



## CONSULTING

various consulting services in the power sector and oil and gas sector



## **SUPERVISION**

Includes the examination of the conditions that the contractor must fulfill



## **HEALTH AND SAFETY AT WORK**

Health and Safety Management System – BS OHSAS 18001



## **ENERGY CONSULTING**

Through energy audits - energy and cost optimization

# Production



[www.helb.hr](http://www.helb.hr)





Engineering Services



**Production**



Plant Construction



Oil and Gas



Control and Maintenance

— WE PRODUCE CUSTOM-  
TAILORED SOLUTIONS



## **CONTROL AND PROTECTION CABINETS**

Creation of advanced control solutions used in automation of industrial processes or in transformer station protection systems



## **LOW POWER ENERGY DISTRIBUTION**

Complete technical solution– design, manufacture, installation and commissioning



## **PORTABLE POWER AND CONTROL CABINETS**

Robust power and control cabinets for mobile power supply for industrial consumers



## **ENERGY DISTRIBUTION CABINETS**

Mobile datacenters, prefabricated plants, mobile drilling rigs for the petroleum industry and many others.



## **LOW POWER ENERGY DISTRIBUTION**

Experienced team of designers, engineers and technicians can handle the most diverse specialized products.



# Plant Construction



[www.helb.hr](http://www.helb.hr)



Engineering Services



Production



**Plant Construction**



Oil and Gas



Control and Maintenance

- COMPLETE ENGINEERING SERVICE FOR POWER PLANTS.



## **DISTRIBUTION OF ELECTRICITY**

Market leader in the construction of turn-key primary distribution facilities



## **ELECTRICITY TRANSMISSION**

Specialized in the construction of the most complex transmission network facilities. Over 3,000 references worldwide



## **ELECTRICITY PRODUCTION**

Through biomass, hydro, wind, solar or geothermal power plants building



## **INDUSTRIAL PLANTS**

Solutions for industrial drives such as process automation, monitoring and control systems to industrial customers

# Oil and Gas



[www.helb.hr](http://www.helb.hr)



Engineering Services



Production



Plant Construction



Oil and Gas



Control and Maintenance

- AUTOMATION OF  
DRILLING PLANTS WITH  
STATE-OF-THE ART  
TECHNOLOGY



## **PLANT POWER SUPPLY AND CONTROL SYSTEMS**

DC motor drive – SCR, AC motor drive – VFD and auxiliary distribution facility – MCC



## **SPECIAL CABLES FOR TOP DRIVES (SERVICE LOOPS)**

Compatible with worldwide for monitoring and control of Top Drives and power supply of Top Drives





## **AUTOMATION SYSTEMS**

The Z-Torque – the torsional vibration damping device, drilling parameter tracking system, automatic drilling system, etc.



## **RECONSTRUCTION AND UPGRADE OF ELECTRICAL SYSTEMS (DRILLING PLANTS)**

High quality service for reconstruction and upgrading of various electrical systems (BV, GL, DNV, LR, ABS, etc.)



# Control and Maintenance



[www.helb.hr](http://www.helb.hr)



Engineering Services



Production



Plant Construction



Oil and Gas



Control and Maintenance

- MAINTAINING AN ENERGY SYSTEM YOU INCREASE IT'S RELIABILITY AND PREVENT FAILURES



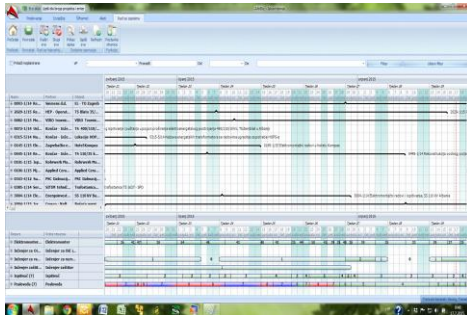
### **INTERVENTIONAL MAINTENANCE 24/7**

Urgent intervention, removal of the malfunction and re-start of the plant



### **PREVENTIVE MAINTENANCE 365**

Preventive maintenance throughout the life of the plant. Periodic examinations and diagnostic tests



## REMOTE MONITORING AND MANAGEMENT OF THE OBJECT

By implementing SCADA systems or cloud monitoring solutions, minimizing OPEX



## ADVANCED MANAGEMENT AND MAINTENANCE SOLUTIONS

By applying Augmented Reality, we allow efficient knowledge transfer of our specialists at the request of the user.

# Projects



[www.helb.hr](http://www.helb.hr)

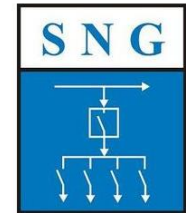
# Croatia: Wind farm Senj

- CLIENT: **YOUTONE CONSTRUCTION LTD.**
- LOCATION: **SENJ, CROATIA**
- SCOPE OF WORK: **ELECTRICAL INSTALLATION WORKS, TESTING, AND COMMISSIONING**
  - **LARGEST WIND FARM IN CROATIA, 39 WIND TURBINES, TOTAL CAPACITY 156 MW, PRODUCE. 530 MIL. kWh A YEAR**
- YEAR: **2021.**



# Germany: GEKA substations

- CLIENT: SCHALTTECHNIK NORD GMBH.
- LOCATION: GERMANY
- SCOPE OF WORK: **CABINETS, ELECTRICAL INSTALLATION WORKS, TESTING, AND COMMISSIONING OF THREE SUBSTATIONS IN GERMANY**
  - GEKA – the leading manufacturer and supplier of innovative and precise solutions for cosmetics products
- YEAR: **2021**





# Croatia: Relocation of the substation with a private buyer

- CLIENT: IREKS AROMA LTD.
- LOCATION: CROATIA
- SCOPE OF WORK: RELOCATION OF SS, MV AND LV CABLE

## CONNECTIONS

- CONSTRUCTION OF SS 20/0.4 kV, 1×1000 kVA, DISMANTLING OF EXISTING SS, AND FINAL TESTS, MEASUREMENTS, AND COMMISSIONING.
- YEAR: **2021.**





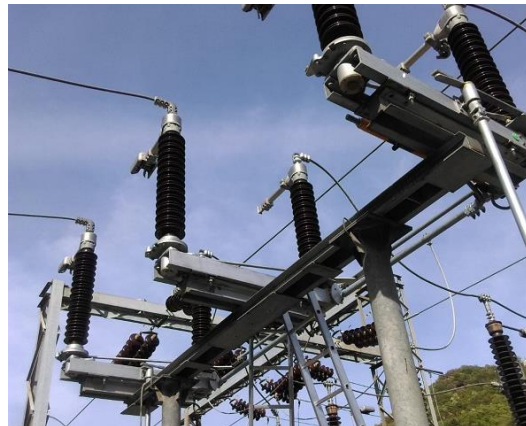
# Croatia: SS Brinje 220/35 kV

- CLIENT: **NORINCO INTERNATIONAL COOPERATION LTD.**
- LOCATION: **SENJ, CROATIA**
- SCOPE OF WORK: **RECONSTRUCTION OF SS BRINJE 220/35 Kv**
  - For the Chinese company Norinco, as part of the wind farm Senj grid connection, HELB designed, installed, and commissioned the 220 kV OHL Feeder “WF Senj” to which the entire wind farm is connected.
- YEAR: **2021.**



# Croatia: Electric power plants in the transmission area of Rijeka

- CLIENT: CROATIAN TRANSMISSION SYSTEM OPERATOR LTD.
- LOCATION: RIJEKA AREA, CROATIA
- SCOPE OF WORK: REPLACEMENT OF DISCONNECTORS TYPE CBE  
**110 kV ON POWER PLANTS IN RIJEKA TRANSMISSION AREA**
  - SS LIČKI OSIK, EVP MORAVICE, SS DELNICE, SS CRIKVENICA, SS KRASICA, SS MATULJI, SS BUTONIGA, SS PAZIN AND SS POREČ.
- YEAR: **2020**



# Croatia: INA Oil Refinery Rijeka

- CLIENT: **IVICOM CONSULTING LTD.**
- LOCATION: **RIJEKA, CROATIA**
- SCOPE OF WORK: **RECONSTRUCTION, CONSTRUCTION OF A SUBSTATION, TESTING, AND PARTICIPATION IN COMMISSIONING**
- YEAR: **2020**



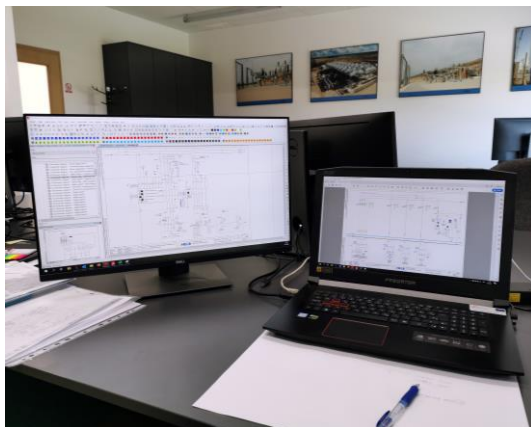
# Ghana & DR Congo: Cabinets

- CLIENT: **PRO INTEGRIS LTD.**
- LOCATION: **GHANA AND DR CONGO**
- SCOPE OF WORK: **PRODUCTION OF THE CONTROL AND PROTECTION CABINETS** FOR KASOA BPS SUBSTATION IN GHANA AND HYDROPOWER PLANT IN THE DEMOCRATIC REPUBLIC OF CONGO.
- YEAR: **2020**



# Germany: Design and production of cabinets

- CLIENT: **PAUL WURTH S.A.**
- LOCATION: **SALZGITTER FLACHSTAHL GMBH, GERMANY**
- SCOPE OF WORK: **DESIGN OF A PROGRAMMABLE LOGIC CONTROLLER AND A DISTRIBUTION CABINET, PRODUCTION AND TESTING**
- YEAR: **2020**





# Croatia: Solar power plant Vis

- CLIENT: KONČAR — POWER ENGINEERING AND TRANSPORT INC
- LOCATION: VIS, CROATIA
- SCOPE OF WORK: ELECTRICAL INSTALLATION WORKS
  - Largest power plan in Croatia
- YEAR: 2020



**KONČAR**

Končar - Inženjering za  
energetiku i transport d.d.



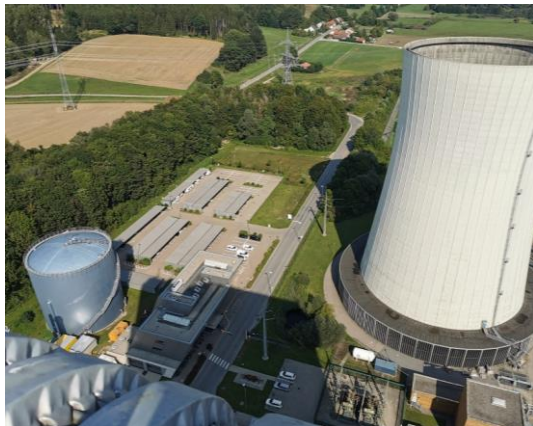
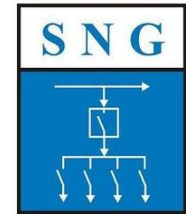
# Croatia: Wind farm Korlat

- CLIENT: ING — GRAD LTD.
- LOCATION: BENKOVAC, CROATIA
- SCOPE OF WORK: ELECTRICAL INSTALLATION WORKS, TESTING AND COMMISSIONING
  - One of the largest wind farms in Croatia
- YEAR: 2020



# Germany: Schalttechnik – Kraftwerk Zolling Thermal Power Plant

- CLIENT: SCHALTTECHNIK NORD GMBH.
- LOCATION: KRAFTWERK ZOLLING THERMAL POWER PLANT,  
GERMANY
- SCOPE OF WORK: FROM PRODUCTION AND ASSEMBLY OF MCC  
TO TESTING AND COMMISSIONING
- YEAR: **2019**





# Croatia: HRT – Croatian Radio and Television

- CLIENT: HRT
- LOCATION: PRISAVLJE ZAGREB, CROATIA
- SCOPE OF WORK: RECONSTRUCTION OF ELECTRICAL INSTALLATIONS OF THE REDUNDANT UPS POWER SUPPLY OF THE MASTER IN THE HOME (MAIN BUILDING)
- YEAR: 2019



# World: On energy transformers in Africa, America, Asia and Europe

- CLIENT: KONČAR POWER TRANSFORMERS, KPT
- LOCATION: AFRICA, AMERICA, ASIA, EUROPE
- SCOPE OF WORK: PRODUCTION OF CONTROL CABINETS FOR POWER TRANSFORMERS, INSTALLATION AND SUPERVISION OF INSTALLATION OF POWER TRANSFORMERS
- YEAR: 2019

Končar  
Power Transformers  
Ltd.



# Region: Maintenance of wind farms

- CLIENT: SEVERAL COMPANIES
- LOCATION: CROATIA, MONTENEGRO, REGION
- SCOPE OF WORK: MAINTENANCE OF WIND FARMS  
THROUGHOUT CROATIA AND THE REGION
- YEAR: **2019**



# Croatia: Geothermal power plant

- CLIENT: **SIEMENS CROATIA**, INVESTOR: **MB HOLDING, TURKEY**
- PRODUCT GROUP: SIEMENS SIVACON, NX PLUS, SIMATIC, SIPROTEC
- LOCATION: '**VELIKA 1**' – CAPACITY **16.5 MWE**, THE LARGEST GEOTHERMAL POWER PLANT IN CONTINENTAL EUROPE
- SCOPE OF WORK: THE SUPPLY OF EQUIPMENT AND ELECTROMECHANICAL WORKS IN TRANSFORMER STATION OF GTE VELIKA CIGLENA
- YEAR: **2018**



# Oman: 220 kV substation

- CLIENT: (SIEMENS) KONČAR POWER TRANSFORMERS
- LOCATIONS: SOHAR, OMAN
- SCOPE OF WORK: SUPERVISION OF INSTALLATION AND TESTING OF POWER TRANSFORMERS 500 MVA, 220 kV
- YEAR: 2018

**SIEMENS**





# Egypt: Combined - cycle natural gas power plants

- CLIENT: SIEMENS AG, GS SCM C SG EFS FS
- LOCATION: BENI SUEF, NEW CAPITAL & BURULUSS
- SCOPE OF WORK: SUPERVISION OF INSTALLATION OF POWER TRANSFORMERS 485 MVA, 500 kV
- YEAR: 2018

**SIEMENS**



# Croatia: SS 110/10 (20) kV Zamet

- INVESTOR: CROATIAN TRANSMISSION SYSTEM OPERATOR LTD.
- CLIENT: SIEMENS CROATIA
- LOCATION: CROATIA
- SCOPE OF WORK: INSTALLATION OF GIS 110 kV FOR INTERNAL INSTALLATION
- YEAR: 2017- 2018





# Ukraine: Equipment for subarctic conditions

- CLIENT: **CROSCO**, FOR UKRGASVYDOBUVANNYA (UGV) PJSC
- LOCATION: **UKRAINE**
- SCOPE OF WORKS: **PREPARATION OF EMSCO 605:**
  - Replacement of MCC connector and connecting board, drilling plant's cables and connectors, cooling units in PCR, complete lighting on the drill facility
  - Complete rig winterization
- YEAR: **2016 -2017**



# UK: Offshore wind park

- CLIENT: **DONG**, PROINTEGRIS FOR **SIEMENS**
- LOCATION: **BURBO BANK & WALNEY EXTENSION - ONSHORE / OFFSHORE PLANT 400, 220, 34 kV FOR WIND POWER CONNECTION**
- SCOPE OF WORK: **FUNCTIONAL TESTING**
- YEAR: **2016**

**SIEMENS**



# Croatia: Dubrovnik airport

- CLIENT: **DUBROVNIK AIRPORT**
- LOCATION: **DUBROVNIK, CROATIA, MEDITERANEAN TOURISTIC CENTAR**
- SCOPE OF WORK: **RECONSTRUCTION OF SUBSTATION TS-1**  
**10(20)/0,4 kV; 2x1000 Kva.**
  - all works performed during the height of the season  
without the air traffic disturbance
- YEAR: **2016**



# Croatia: SS 110/10 (20) kV Ploče

- INVESTOR: CROATIAN TRANSMISSION SYSTEM OPERATOR LTD.
- CLIENT: KONCAR - POWER PLANT AND ELECTRIC TRACTION ENGINEERING INC.
- LOCATION: PLOČE, CROATIA
- SCOPE OF WORK: SUPPLY AND INSTALLATION OF PRIMARY EQUIPMENT (GIS 110 kV) FOR INTERNAL INSTALLATION
- YEAR: 2016

**SIEMENS**



# Iraq: New AIS 132/33/11kV SS

- CLIENT: KURDISTAN REGIONAL GOVERNMENT, MINISTRY OF ELECTRICITY (MOE)
- LOCATION: KOYA, REZAN, SHAQLAWA, SORAN, QUSHTAPA
- PROJECT DESCRIPTION:
  - ERECTION WORKS
  - SITE TESTING & COMMISSIONING OF ALL EQUIPMENT/SYSTEMS
- YEAR: **2013-2014**





# Croatia: Zagreb international airport

- CLIENT: **ZAGREB INTERNATIONAL AIRPORT**
- LOCATION: **ZAGREB, THE CAPITAL OF CROATIA**
- SCOPE OF WORK: **CONSTRUCTION & RECONSTRUCTION OF SS & SWITCHYARDS**
  - Challenge: continuous power supply
- YEAR: **1996-2014**



# Albania: Main 220 kV switchyards

- CLIENT: KESH SH.A. - KORPORATA ELEKTROENERGJITIKE SHQIPTARE
- LOCATION: ALBANIA
- MAIN SWITCHYARDS FOR HYDRO POWER PLANTS: FIERZA & VAU DEJËS
  - All works conducted **without power interruptions**
- YEAR: **2013**





# Croatia: Jackup drilling rig Labin

- CLIENT: **CROSCO**, INTEGRATED DRILLING & WELL SERVICES CO.
- LOCATION: CROATIA - THE ADRIATIC SEA
- SCOPE OF WORK: RECONSTRUCTION, TESTING & COMMISSIONING OF THE MAIN POWER CONTROL STATION (GENERATOR INCOMERS, SWITCHBOARD, MAIN AC/DC DRIVES)
- YEAR: **2013**



# Croatia: Photovoltaic solar plant Biograd

- CLIENT: **MERIDIAN NEUE ENERGIEN GMBH, GERMANY**
- LOCATION: BIOGRAD- THE BIGGEST SOLAR PLANT IN THE REGION OF **DALMATIA**
- THE INVESTOR'S **INTERNAL QUALITY CONTROL** UNDERLINES EXTREMELY HIGH QUALITY CONSTRUCTION & TECHNICAL PERFORMANCE
- YEAR: **2013**



# Albania: Main 220 kV SS

- CLIENT: OST SHA ALBANIA -OPERATORI SISTEMIT TRANSMETIMIT
- LOCATION: MAIN SUBSTATIONS IN THE CAPITAL OF ALBANIA: TIRANA, ELBASAN
- ALL WORKS CONDUCTED IN EXTREME WEATHER CONDITIONS
- YEAR: **2012**



# Croatia: Thermal power plant Zagreb

- CLIENT: CROATIAN ELECTRICITY COMPANY HEP-PRODUCTION LTD., BUILDING: BLOCK “L” 100 MWE/80 MWT
- SCOPE OF WORK: RECONSTRUCTION OF 110 kV SWITCHGEAR, RECONSTRUCTION OF LV & MV DISTRIBUTION BOARDS/SWITCHGEARS
  - All works conducted **without power interruptions**
- YEAR: **2009**



# Croatia: Windpark Vrataruša 42 MW

- CLIENT: **VALALTA ROVINJ** — GREENFIELD INVESTMENT
- FIRST SIGNIFICANT **CROATIAN** WIND PARK CONNECTED TO 110 kV TRANSMISSION NETWORK
- SCOPE OF WORK: MAIN CONTRACTOR FOR **ELECTRICAL INSTALLATION & ERECTION WORKS**
- YEAR: **2008-2009**



# Croatia: Motorways Ltd.

- CLIENT: **HAC CROATIAN HIGHWAYS LTD.**
- KEY OBJECTS FOR TRANSMISSION & DISTRIBUTION
- SCOPE OF WORK: **RECONSTRUCTION OF 110 kV SWITCHGEAR**
  - SS Oštarije, SS Andrijevci 110/35/10(20) kV
  - SS Bobovje 110/20 kV, SS Obrovac 35/10/20 kV
  - SS Sveti Rok, SS Mala Kapela 35/20 kV
- YEAR: **2003-2008**





# Croatia: Thermal power plant Zagreb

- CLIENT: SIEMENS CROATIA
- LOCATIONS: EL-TO ZAGREB
- SCOPE OF WORK: RECONSTRUCTION OF EL-TO ELECTRIC POWER PLANT
- PROJECT DURATION: 18 MONTHS

**SIEMENS**





# Croatia: 7 biomass cogeneration plants

- LOCATIONS: BE-TO CHP SISAK, OSIJEK, ĐAKOVO, SLAVONSKI BROD, GLINA 1, GLINA 2, SAVA
- NET ELECTRICAL OUTPUT: 1-5 MWe, HEAT: 3-15 MWt
- SCOPE OF WORK: GENERAL CONSUMPTION OF BE-TO



Can we HELB you?



[www.helb.hr](http://www.helb.hr)

# HEL B Team

- **HEL B HAS THE TOP EXPERTS WHO, AT EXTREME WEATHER, DIFFERENT LOCATIONS AND COMPLEXITY OF OBJECTS ALWAYS SUCCESSFULLY OVERCOME OBSTACLES AND DELIVER TOP-NOTCH RESULTS.**
- **OUR VALUES, SUCH AS **MUTUAL COOPERATION**, LEAD US TO SUCCESS**
- **WE ALWAYS PUT OUR CUSTOMER FIRST, SO HEL B OFFERS A SOLUTION BEYOND THEIR EXPECTATIONS**



Thank you



[www.helb.hr](http://www.helb.hr)